



METALS & PLASTICS
EXPERTISE • COLLABORATION • INTEGRITY

Righton Blackburns is an independent metals and specialist plastics stockholder and distributor. We have been a trusted supply partner for premium quality products for over 100 years.

Today we are recognised as the leading supplier to a diverse customer base including safety-critical markets, government agencies and departments, and FTSE 100 companies.

Our reputation is founded on both the efficiency and integrity of our business dealings, as well as our proven ability to innovate and respond to change. This strength and agility remain true today.

Operating from 10 Service Centres across the UK, we are well placed to service any requirement from one-off supplies, to direct-to-line feed services and long term contracts.

Dedicated to the continued development of new business and backed by our ISO9001-2015 status, we guarantee that exceptionally high-quality products and service will always be the Righton Blackburns' standard.

Specialist Markets

For further information on the full range of products we supply into our specialist markets, please contact your local Service Centre to request a copy of the brochures dedicated to those specific markets.



Aerospace & Defence



Automotive & Transport



Marine & Shipbuilding



Power Generation



Precision Engineering



Process Plant



Sign & Display



Bespoke Aluminium Extrusions



METALS & PLASTICS
EXPERTISE • COLLABORATION • INTEGRITY

Righton Blackburns Service Centres

Operating a reliable and efficient delivery service from our 10 Service Centres nationwide, we offer in-house processing facilities. In addition to next day delivery from locally-held stock, we also provide non-standard or customer specific material.

BEDFORD

Tel: +44 (0)1234 684 100
Email: bedford@rblimited.co.uk

BIRMINGHAM

Tel: +44 (0)1384 282 630
Email: birmingham@rblimited.co.uk

BRISTOL

Tel: +44 (0)117 948 2600
Wales Sales Office
Tel: +44 (0)1656 683 900
Email: bristol@rblimited.co.uk

GATESHEAD

Tel: +44 (0)191 338 7000
Email: gateshead@rblimited.co.uk

GLASGOW

Tel: +44 (0)141 646 3730
Email: glasgow@rblimited.co.uk

LEEDS

Tel: +44 (0)113 386 3280
Email: leeds@rblimited.co.uk

MANCHESTER

Tel: +44 (0)1942 758 800
Email: manchester@rblimited.co.uk

NORWICH

Tel: +44 (0)1603 243 900
Email: norwich@rblimited.co.uk

PORTSMOUTH

Tel: +44 (0)2392 623 070
Edenbridge Sales Office
Tel: +44 (0)1732 582 700
Email: portsmouth@rblimited.co.uk

PLYMOUTH

Tel: +44 (0)1752 844 931
Email: plymouth@rblimited.co.uk

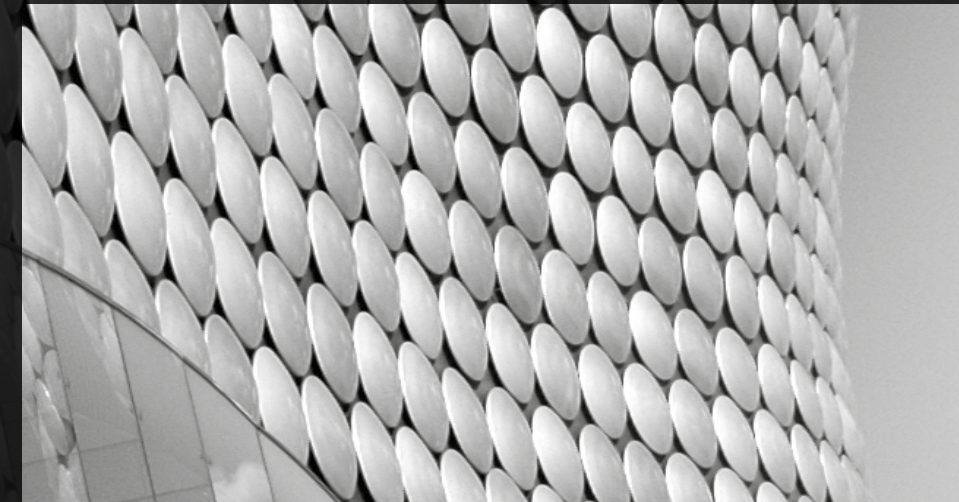


www.rightonblackburns.co.uk

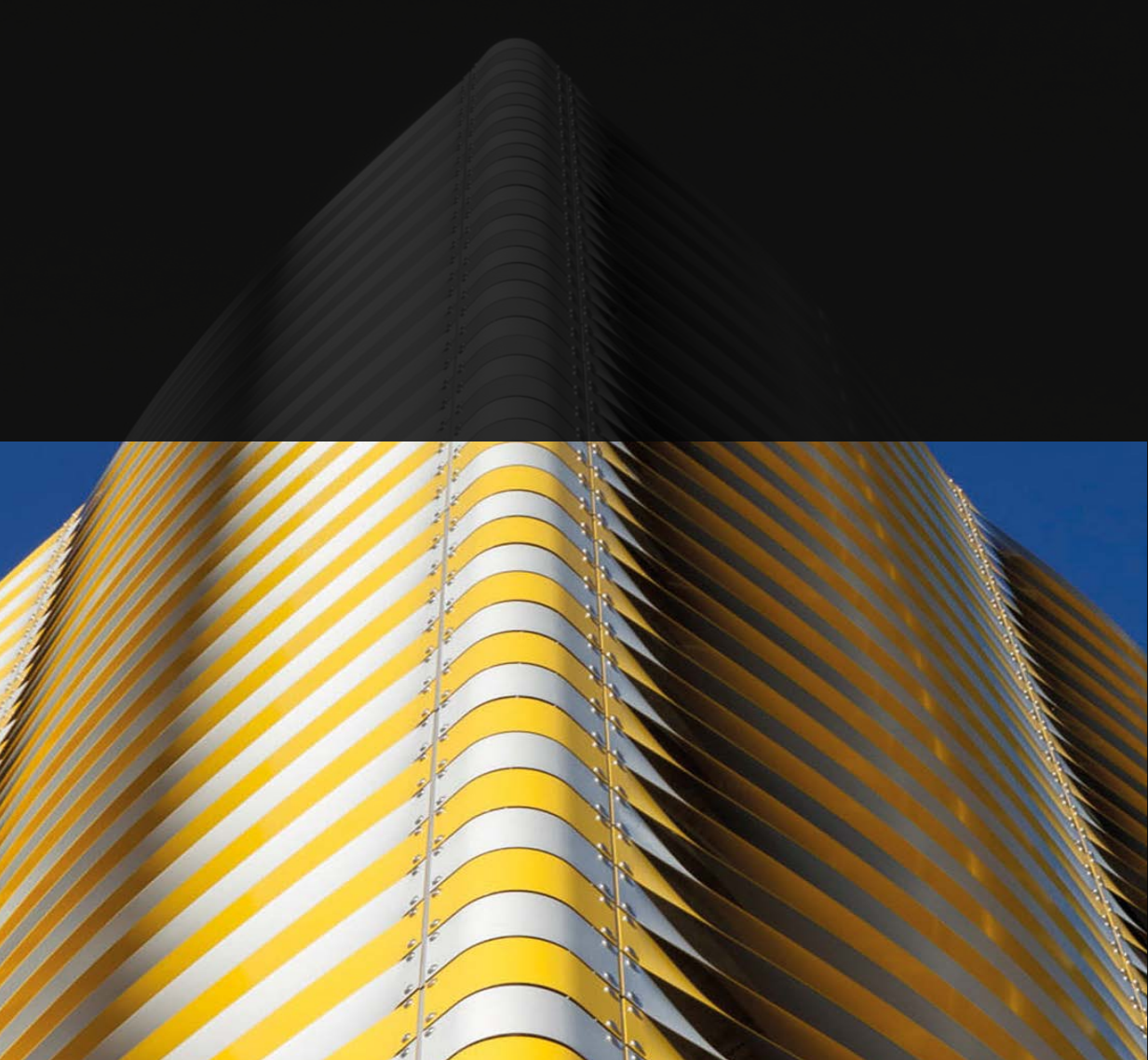


METALS & PLASTICS
EXPERTISE • COLLABORATION • INTEGRITY

ARCHITECTURE & INFRASTRUCTURE



www.rightonblackburns.co.uk



Righton Blackburns provides a wide range of solutions for the built environment. From internal and external, through structural, to cladding and decorative, our products are known for their strength, corrosion resistance and low maintenance for a long lifespan.

Our range of aluminium, stainless steel, copper, brass and bronze comes complete with a selection of finishes, colours and textures for every application. Whether you are looking for anodised, colour anodised, polished, brightened, painted, patterned or textured, Righton Blackburns has the answer.

Alongside our extensive portfolio of solutions for the built environment, we offer tailored branded products to supplement our offering to this market. This ensures that Righton Blackburns is the first choice, whatever your requirement in architectural metals and plastics.

www.rightonblackburns.co.uk



METALS & PLASTICS

EXPERTISE • COLLABORATION • INTEGRITY

Creative solutions for modern architecture & infrastructure applications



Pro-Railing® Handrail

Pro-Railing® is a stylish, durable and cost effective stainless steel handrailing component system designed with ease of installation in mind.

The Pro-Railing® system enables the most stylish of handrailing and balustrades to be constructed quickly and simply by the contractor. Just cut, glue or screw to create professional results every time.

Specifiers can be assured that component design and range flexibility means installation by a competent installer is a straight forward process.

We offer a range of infill solutions using glass with glass clamps, wire rope, round and decorative bars. We can also supply infill panels incorporating perforated metal, wire mesh and wire rope netting.

The extensive Pro-Railing® range is available in type 304 and type 316 to suit internal and external applications and you can be sure Pro-Railing® quality and product care will ensure stunning results. We also stock an extensive range of standard handrail tube in 6 metre lengths.



Aluminium

Modern architecture would not be possible without aluminium. It is functional, cost effective, light but strong, non-corrosive, non-toxic, durable and allows for a greater variety of aesthetic and environmental considerations. In addition to structural applications, some of its uses include doors, windows, sliding, roofing, curtain walling, Brise soleil sun shading, flashings, balustrades and decorative applications. One of the most energy-efficient and sustainable construction materials, at the end of the life cycle it can be re-melted to produce new aluminium without loss of quality, ensuring infinite recyclability. High quality anodising aluminium for facades, cladding, ceilings, walls and showcase designs is also available.

Grades

1050, 5005, 5083, 5251, 5754, 6063, 6082, Aleris 55HX®



Stainless Steel

Stainless steel has been the leading material for projecting progressive, modern architecture for more than eighty years. It is popular for high-traffic public transit, security and other architectural applications where long-term durability is an essential consideration. Stainless steel products are attractive and corrosion resistant, straightforward to fabricate, need little maintenance, offer good strength, toughness and fatigue properties, and are fully recyclable at end-of-life. Structural applications include load-bearing components in pedestrian, road and railway bridges and tunnels, while it is also widely used for street furniture and in entrance structures to underground stations.

Grades

1.4301 & 1.4307 (304), 1.4404 & 1.4401 (316), 1.4462 F51 Duplex, 1.4501 F55 Super Duplex



Copper

Copper is a natural, 100% recyclable material and due to its performance, durability, range of colours, forms and textures, its largest end use can be found in the building industry. Copper provides a beautiful, practical and sustainable contribution to modern construction as a visually pleasing material, able to give structures a touch of sophistication.

Complementing commonly-used materials such as brick, wood, stone and glass, copper can be used for buildings with modern or traditional styles for both indoor and outdoor architectural elements, including wall cladding, roofs, gutters, and expansion joints.

Grades

CW004A (C101), CW024A (C106)



Copper Alloys

Brass - Beauty, elegance, strength and versatility: The qualities of brass that make it an outstanding metal for countless architectural needs. Often used as a cladding material brass naturally patinates through the years. It is extremely durable, can withstand very high temperatures, is corrosion resistant, does not rust, and has a machinability which allows shaping into countless forms without losing strength.

Bronze - Combining stability, strength and longevity with an aesthetic appeal which improves with time, bronze is commonly used for door and window frames and hardware, letterboxes, trim or rails, and furniture hardware.

Grades

CW606N (CZ131), CW614N (CZ121), CW721R (CZ114), CW624N (CZ130), CW505L (CZ106), CW508L (CZ108HH), C38500, CW307G, CA104



Hygienic PVC Cladding

Ever-increasing regulatory requirements are being placed on hygiene standards in food, medical and farming industry buildings. Hygienic PVC cladding from Righton Blackburns has a smooth, anti-bacterial surface that is easy to clean and extremely durable. This lightweight PVC sheet available in 0.9mm - 3mm makes it the ideal cladding material for walls and ceilings. It transforms normal wall finishes into an even, cleanable surface which is impervious to the ingress of dirt and is water-resistant. It is an ideal material to use in hygienically demanding application areas where anti-microbial action may be required.

It is resistant to cracking and splitting, providing excellent protection against abrasion to maintain a hygienically smooth cleanable surface.

A full accessory range of hygienic jointing strips, corners and trims is available upon request.